

Fleece Slouch Hat

Two Pieces: Hat (cut on cross grain) 23 x 10-inches

Facing (cut on cross grain) 23 x 5-inches

Supplies: Sewing machine, pins, matching thread

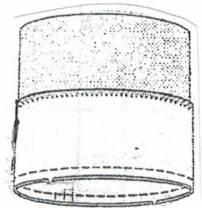
Seam Allowance: $\frac{1}{2}$ - inch

Note: To find the fleece right side – pull on lengthwise grain, will roll to right side.
Pull on the cross grain, will roll to the wrong side.

Sewing Directions:

1. With right sides together, sew narrow ends of hat piece together.
2. With right sides together, sew narrow ends of facing piece together.
3. Finger press seam allowances open.
4. With right sides together, pin facing to hat, matching seam allowances. Stitch together at lower edge.

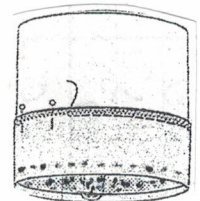
4.



5. Turn facing to INSIDE of hat, **over seam allowance**, creating a $\frac{1}{2}$ -inch self binding on the lower edge. Stitch in the ditch from the right side.
NOTE: Facing will wrap around seam allowances and show on right side for trim.

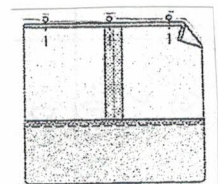
6. Turn to INSIDE. Pin facing raw edge in place, placing pins on INSIDE. Stitch facing to hat, stitching $\frac{1}{4}$ -inch from unfinished edge. **TIP:** It is easier to stitch inside if turned RIGHT side out.

6.



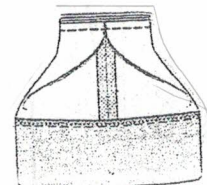
7. With INSIDE out, fold upper raw edge together with lengthwise seam allowance centered. Pin.

7,



8. Bring the two folded sides together at center back seam. Pin. Stitch through all thicknesses.

8.



9. Turn right side out.

9.

